

# flagey

## TECHNICAL RIDER STUDIO 5

Update : 13/03/2025



### Contact

Flagey vzw/asbl  
Rue du Belvédèrestraat 27/5  
B-1050 Brussels  
Tel : +32(0)2 641 10 10  
info@flagey.be  
www.flagey.be

# General Information

## Technical and artist entrance

Rue du Belvédèrestraat 25  
B-1050 Brussels

Studio 5 on the ground floor.

Access is possible from the loading dock or from Rue du Belvédèrestraat 29

**Capacity: Total: 121**

All seats are fixed



# Cinema setup

## Screen

Fixed supermat white perforated - 7m30 x 4m50 – Ratio image 1.85 Pano american

## DCP installation

Cinema projector – DLP Barco DP4K-23B 1,4kw – 4kw (Xenon lamp)

Doremi Server DCP2K4-ShowVault 5.4TB

Barco video Scaler ACS2048

Library Dell PowerEdge R310 6.0TB + Orchestra 18TB

Connection Gofilex library

## 35mm installation

35mm FP30 D Kinton 2,5kw projector

Wall mounted winding machine 35mm Kinton

35mm film spool 5000m (x17)

## Sound

Dolby Digital Cinema Processor CP650

Dolby DMA8Plus D/A Converter

5 QSC Digital Cinema Amplifier

3 JBL 36/78 300w RMS

2 SUB JBL 36/35

AMB JBL 83/30 A x 835mm FP30

2 SM58 mics for introductions / speeches – controlled for the projection cabin

## Light

Studio 5 is equipped with basic front light to cover the area in front of the screen for introductions / speeches.

Those can be controlled from the entrance of the studio.

## Piano

A Yamaha B2 upright piano can be made available upon request for silent movies

# Conference setup

## Projection

Fixed supermat white perforated - 7m30 x 4m50 – Ratio image 1.85 Pano american  
Cinema projector – DLP Barco DP4K-23B 1,4kw – 4kw (Xenon lamp)  
Barco video Scaler ACS2048

Flagey has an extensive collection of adapters to work with and combine different standards. SDI, NDI, Mac, PC, BNC, HDMI

If speakers are all seated, only a small portion of the screen can not be used.

If speakers need to stand center stage, it might be necessary to reduce the size of the image and add a black banner on the source. Please contact us for advice.

## Video mixer & sources

- 1 Roland V-1HD+ / Roland V60-HD
- 1 Blackmagic Atem Mini
- 1 TvOne C2-2855 universal scaler
- 1 Blu-ray reader – DVD LG BD550

## Sound

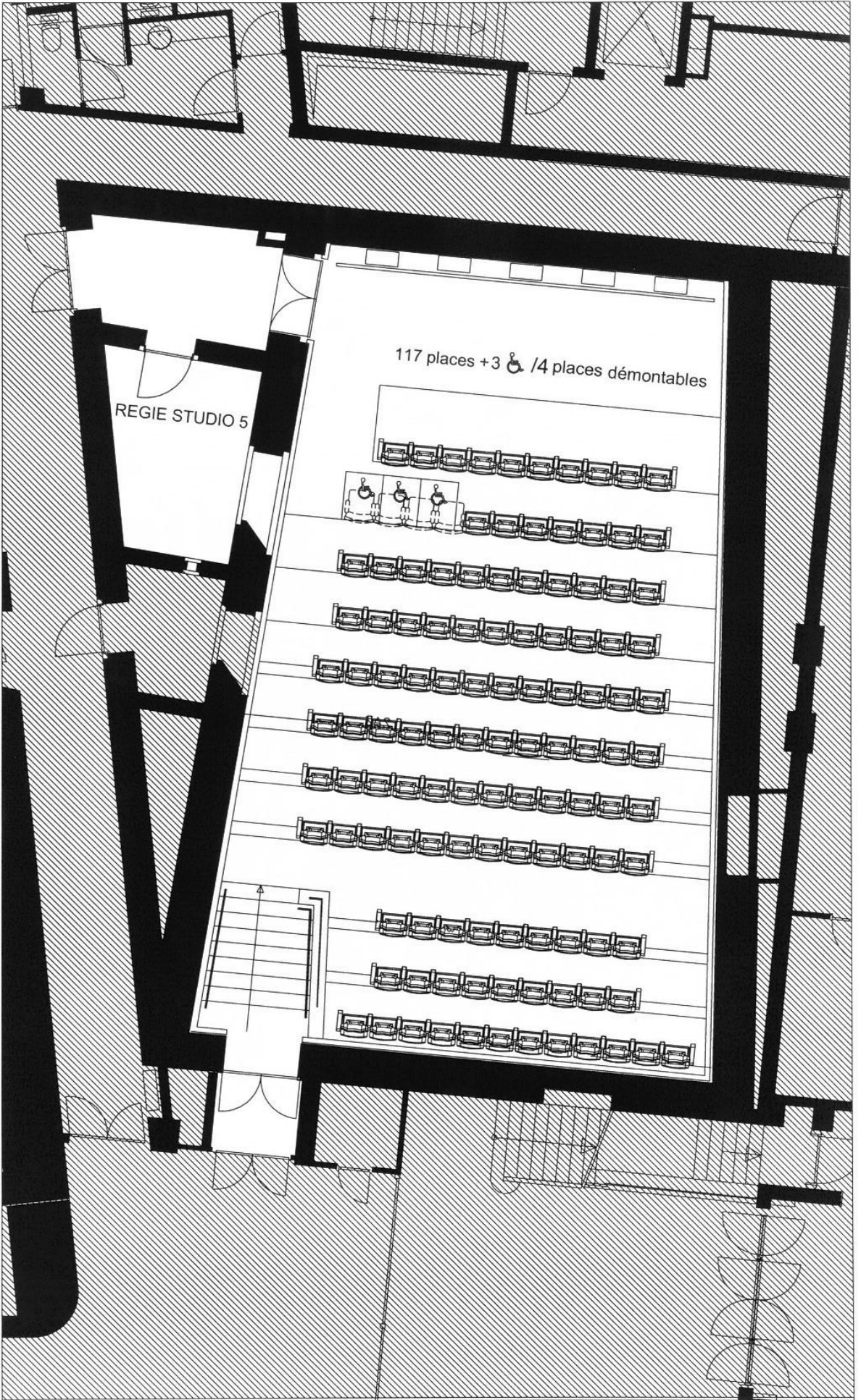
Studio 5 is always equipped with two wired mics that can be controlled from the projection cabin.

For more complex setups with more mics, a mobile sound system is added. The exact speakers depend of availability but a typical system is composed of:

- 1 Yamaha mixer MX12/4
- 2 Shure SLX Wireless system with 4 handheld cardioid microphones.
- Speakers D&B T10, MAX12 or E3 on stands

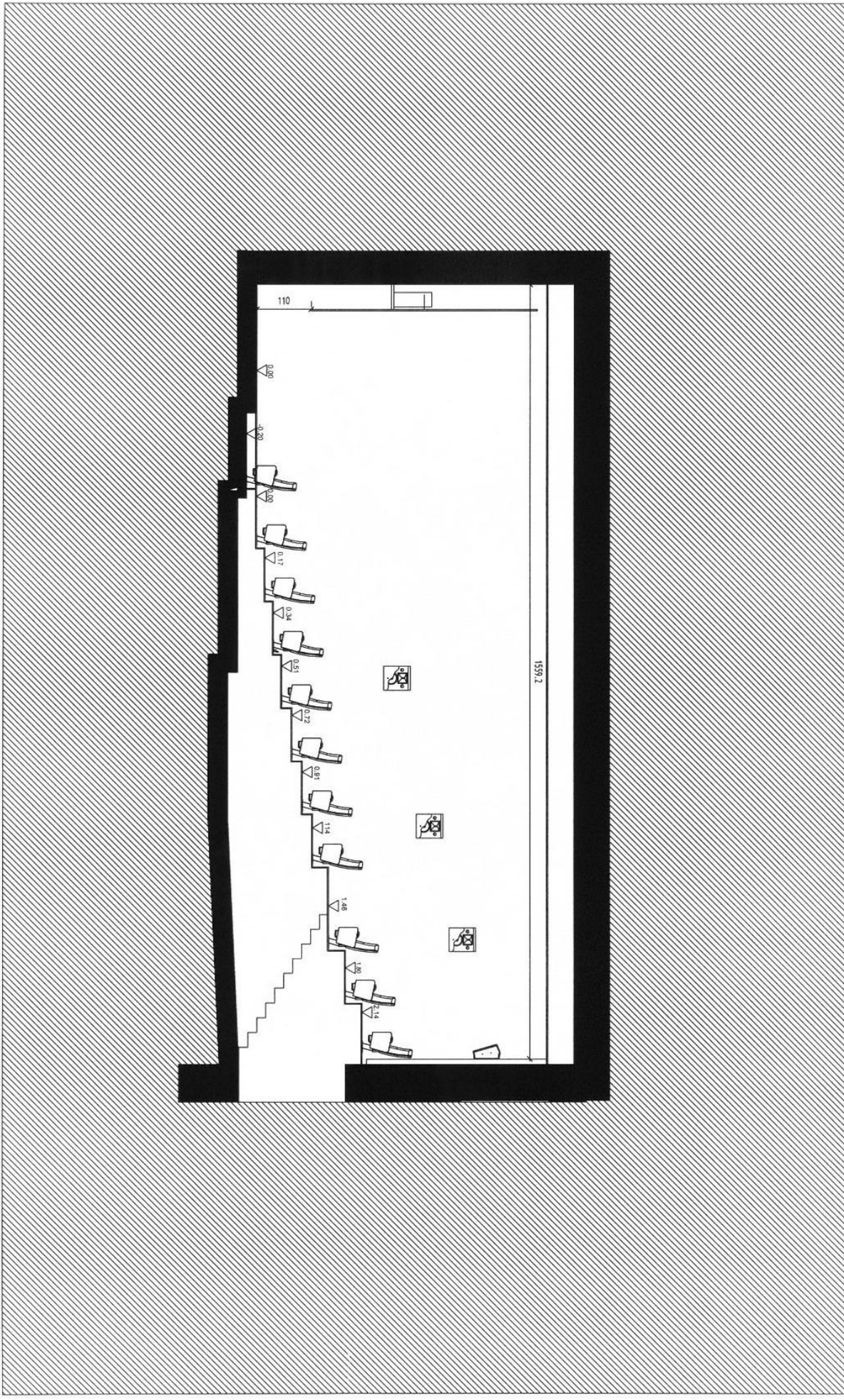
## Light

Studio 5 is equipped with basic front light to cover the area in front of the screen.  
Those can be controlled from the entrance of the studio



Plan dressé suivant plans cinema-technics-kinoton

 THIERRY ANDERSEN & PARTNERS rue A. Camphoutstraat 72 B-1050 Bruxelles - Brussel	échelle : 0 m	date : 2003-02-07 file : 31-049-08-26 dessin : TV	plan C 12	5	vérif. 10	FLAGGEY Studio 5
	1	1	5	10	FLAGGEY	Studio 5



Plan dressé suivant plans cinema-technics-kinoton

 THIERRY ANDERSEN & PARTNERS ARCHITECTS	échelle : 0 m	1	5	10
	Thierry Andersen & Partners rue A. Campenhoutstraat 72 B-1050 Bruxelles - Brussel	date : 2003-02-07 file : 31-049-08-26 dessin : TV	plan C 13	<b>FLAGGEY</b>
<b>coupe Studio 5</b>				