

flagey

TECHNICAL RIDER

STUDIO 1

Update : 27/08/2024



Contact

Flagey vzw/asbl
Rue du Belvédèrestraat 27/5
B-1050 Brussels
Tel : +32(0)2 641 10 10
info@flagey.be
www.flagey.be

General Information

Technical and artist entrance

Rue du Belvédèrestraat 25
B-1050 Brussels

Studio 1 is located on floor -1

Access is possible from the loading dock

Service elevator :

Width: 1,20m

Depth: 2,40m

Height: 2,90m

Loading dock entrance:

Width: 4,32m

Height: 2,90m

Capacity: Total: 156

All seats are fixed

When a mixing desk is needed in the hall, this reduces the capacity by 8 seats



Stage

Stage dimensions

Width: 12 m.

Clearance: 8, 18m front stage and 6,92 m backstage, (levelled stage).

Depth: 11,35m

Stage risers

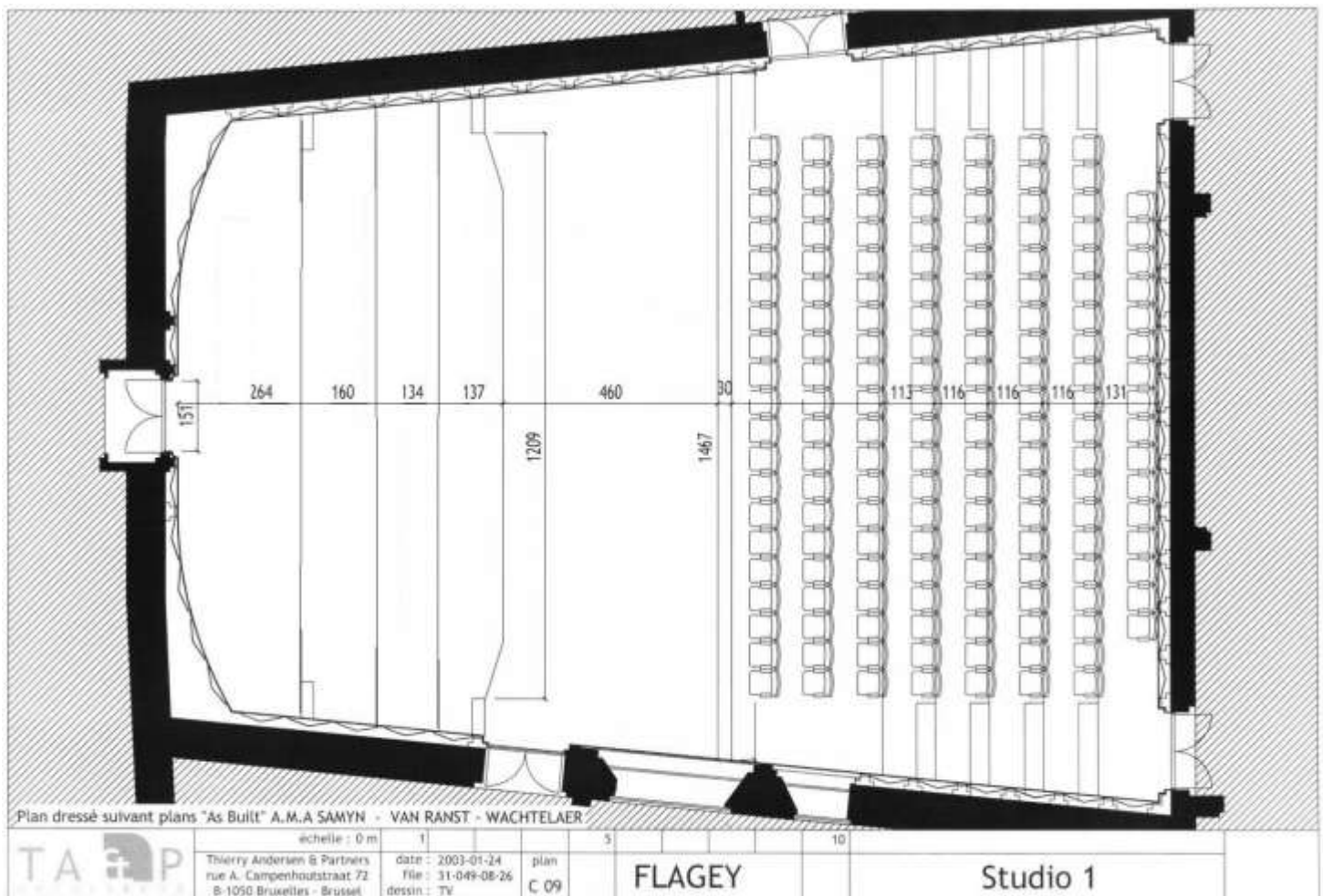
The stage consists of 5 **fixed** rectangular platforms, rising up towards the back of the stage and functioning as natural, built-in risers.

The studio narrows towards the back of the stage.

All additional risers have the same wooden finish as the stage and can be used for risers on stage or for a proscenium. The risers are shared between the studios and are therefore not always available:

6 2x1m

2 2x1m



Piano

One piano is permanently stocked on the stage and **cannot** be removed.

Please contact your promotor / production manager if you want to make use of a grand piano.

Steinway D (2015) – 442Hz Only

Acoustical treatment

Studio 1 is equipped with an original acoustic modulation system dating from the 1930. This still fulfils today's needs: the 47 rotating columns expose a reflecting or an absorbing surface, allowing a variation of reverberation time between 1.1 and 1.9 seconds.

Music stands and stage equipment

| | |
|----|---|
| 50 | Musician chairs |
| 1 | High chairs |
| 10 | Music stands (more available in other studio's) |
| 6 | Guitar stands |
| 5 | Double bass stands |

Dressing Rooms

Dressing Rooms

1 x Large dressing room (25m² - Level -1)

3-seat sofa, desk, full length mirror, fridge

Private bathroom with shower and toilet

Ibach warm-up grand piano

2 x dressing room (20m² - Level -1)

2seat sofa, desk, full length mirror, fridge

Private bathroom with shower and toilet

Sound

Stereo FOH

FOH L/R: D&B CI9 on stand per side

FOH Subs: 2x E18 , from L/R or separate send.

Epac Amplifiers

CI9: 90°x40°

E18: 18" sub

Mixing desks

Yamaha LS9/16 or Midas Pro2C with DL251

Monitors are always mixed from the front

Wedges

Maximum 11 wedges + PFL

10 D&B Max 12, 12", 60° radial

2 D&B Max 15, 15", 60° radial

8 E3 for small applications

10 EPAC Amps

2 D6 Amps

Mics

The collection has to be shared among all studios and is therefore not always entirely available. Please consult.

1 Shure Beta52

1 AKG D112

1 Shure Beta 91A PZM

5 Shure SM57

6 Shure SM58

2 Shure Beta 58A supercardioid

1 Shure Beta 87A supercardioid

1 Shure Beta 87C cardioid

3 Shure Beta 98A + drummounts + hornmounts

3 Sennheiser e604

3 Sennheiser MD421

2 Beyerdynamic M88

1 Electro Voice RE20

2 AKG C 451

2 AKG C414 B-ULS

2 AKG C41 XLS – matched pair

2 AKG C411

2 Audix ADX60 PZM

1 Audix D1

2 Audix D2

1 Audix D4

4 Neumann KM184

2 Neumann KM185

2 DPA 4011

2 DPA 4006C

- 2 DPA 2011C
- 4 DPA 4099 + various clips
- 2 DPA SC4098-BX45 Gooseneck

- 8 Active DI BSS AR133
- 1 Apex stereo DI
- 8 Shure MX412
- 2 Shure MX418
- 2 Schertler DYN Grand piano

Flagey also has a selection of recording microphones. See below for 'recording equipment'.

Wireless Microphones

Legal frequencies in Belgium (@2015), no permits needed:

TV channel 27 (518.000 MHz -526.000 MHz) max 50mWatt

TV channel 29 (534.000 MHz -542.000 MHz) max 50mWatt

We are occupying a lot of frequencies in TV Channel 27 and 29, SO PLEASE LET US KNOW if you bring your own radio systems so we can check compatibility.

KIT A: 4 channels - TV channel 29 (534.000 – 542.000 MHz)

- 1 ULX-D4Q Quad receiver (534 to 598 Mhz)
- 4 Shure ULXD2 Beta KSM9 Handheld (cardio or super cardio)
- 2 UA874 WB Active directional antenna

KIT B: 6 channels - TV channel 29 (534.000 – 542.000 MHz)

- 1 ULX-D4Q Quad receiver (534 to 598 Mhz)
- 1 ULX-D2Q Dual receiver (534 to 598 Mhz)
- 6 Shure ULXD2 Beta KSM9 Handheld (cardio or super cardio)
- 2 UA874 WB Active directional antenna

KIT C : Mobile system, 2 channels - TV channel 29 (534.000 – 542.000 MHz)

- 1 UR4D Dual receiver (534 to 598 Mhz)
- 2 Shure UR2 SM58 or B87 Handheld
- 2 UR1 beltpack with DPA 4066F OMNI headset
- 2 Directional antenna's

KIT D : Mobile system, 2 channels - TV channel 27 (518.000 – 526.000 MHz)

- 1 Sennheiser EM3032 Dual receiver
- 2 Sennheiser SKM30654 Handheld (cardio)
- 2 SK50 beltpack with DPA 4066F OMNI headset
- 2 Omnidirectional antenna's

KIT VOG: only for announcements in studio 4 TV channel 27 (518.000 – 526.000 MHz)

- 1 Sennheiser EM3032 Dual receiver
- 1 Sennheiser SKM30654 Handheld (cardio)
- 1 Sennheiser SKM50000 Handheld with ME5005 cardop
- 2 UA874WB Active directional antenna's

VARIOUS

- 1 DPA D: fine dual ear DIRECTIONAL headset with TA4F or Lemo
- 2 Mipro MU-53Hn Omni headset with TA4F

Light

The lighting setup is permanent and small adaptations are only possible for very specific situations which should ALWAYS be discussed and approved in advanced.

Mixer

Avolites Pearl 2004

Bringing your own mixing desk should ALWAYS be discussed in advance.

Sources

- 25 ETC 750W Découpe Zoom/Leko
- 2 PC 2kW – Robert Juliat
- 8 PC 1kW – Robert Juliat
- 6 Probeamer Zoom 150W
- 28 Lumipar 50W
- 12 Customized Vintage spots with Eurolite LED bars
- Spares

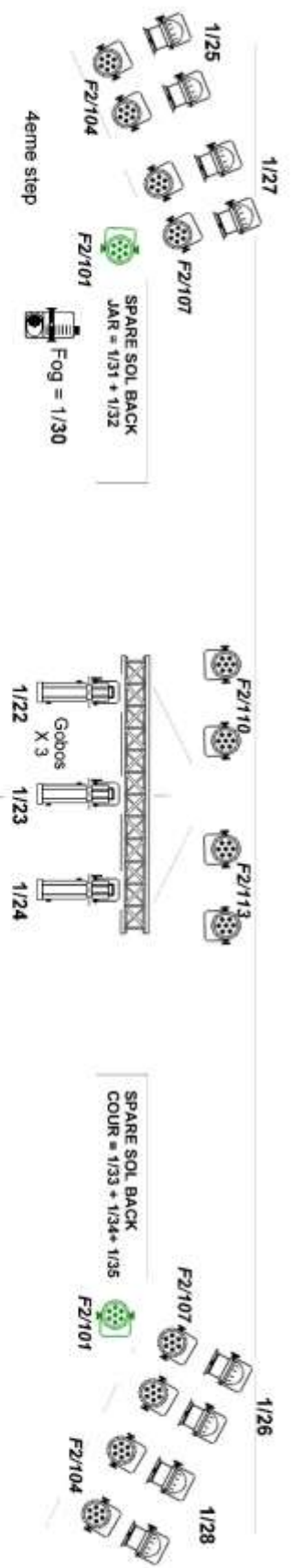
Fog machine

DF50 hazer

Accessories

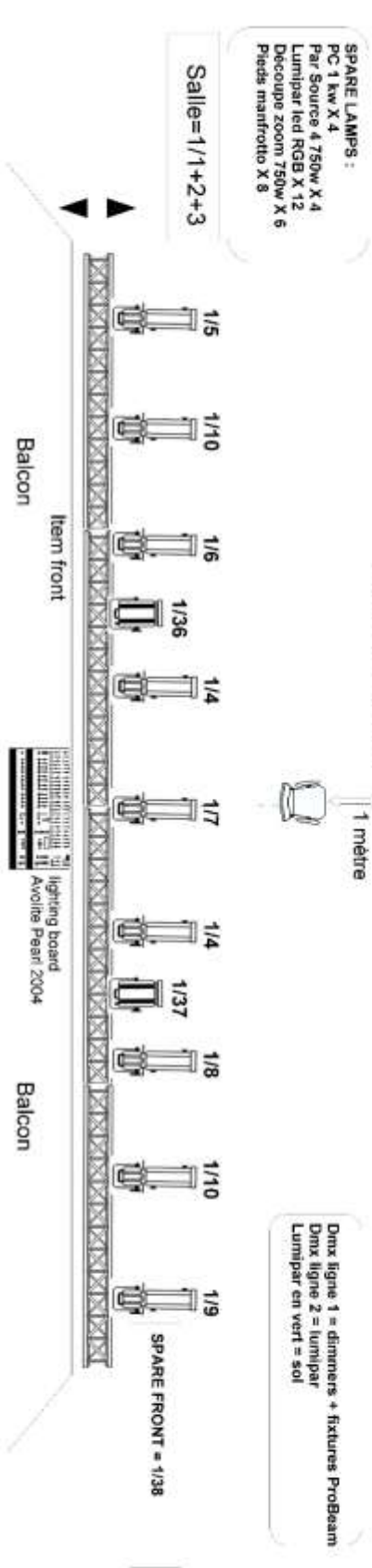
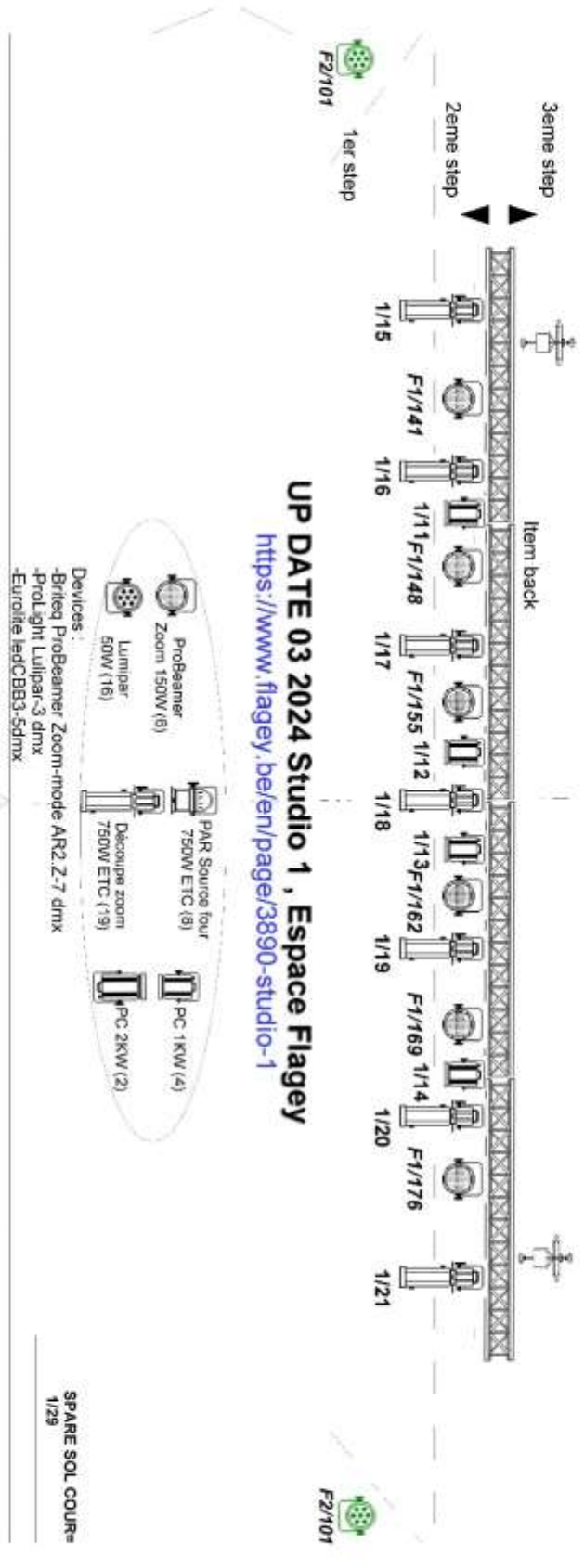
ETC Gobo holder size B10 (internal diameter : 86 mm / diameter of the image : 64,5 mm)

- 13 Manfrotto stand 126U (shared with other studios)

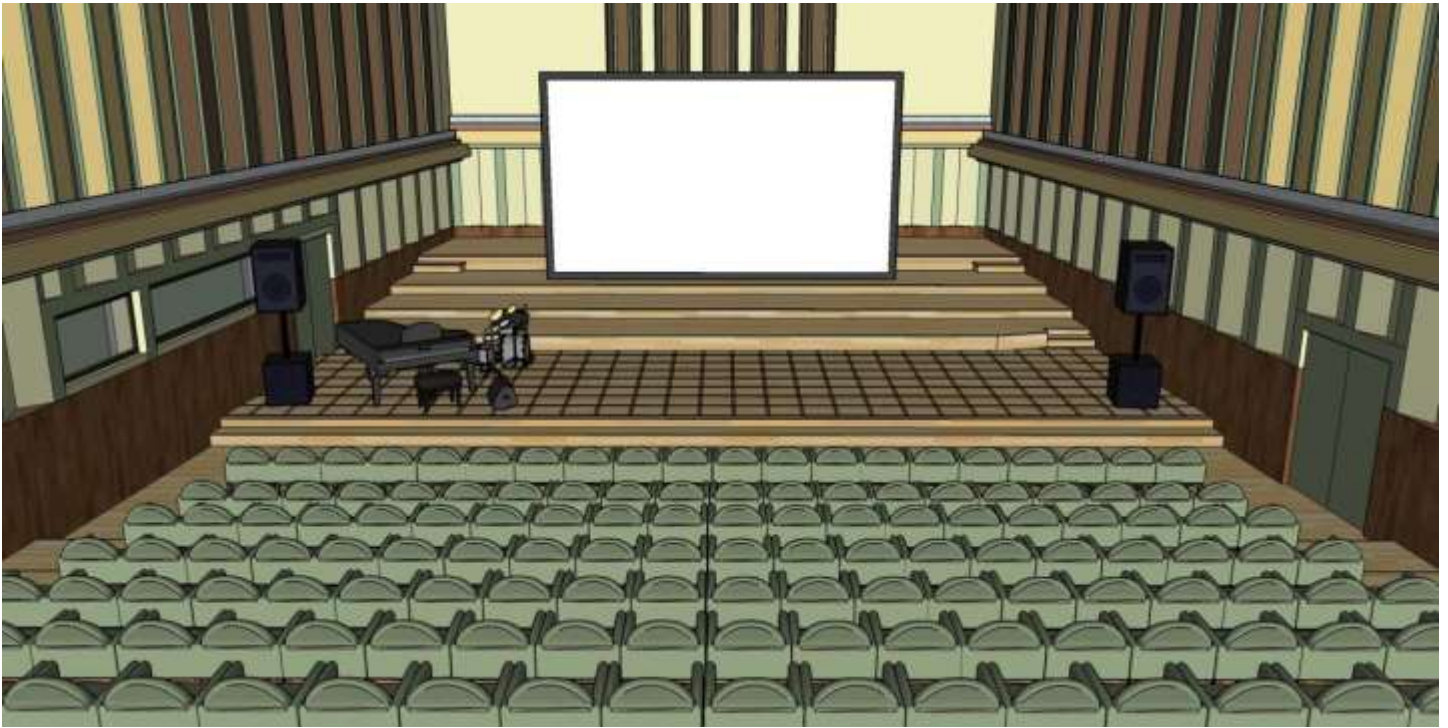


UP DATE 03 2024 Studio 1 , Espace Flagey

<https://www.flagey.be/en/page/3890-studio-1>



Video



Screen

Screen STUMPL white – matt - with black border - frame: 6.30 x 3.63 - Ratio image 16/9

Projector

Panasonic DLP PT-RZ670 Laser diode 6,500 lm – Resolution 1,920 x 1,200 pixels

Mixer & sources

- 1 Roland V-60HD
- 1 Blackmagic Atem Mini
- 1 TvOne C2-2855 universal scaler
- 1 Blu-ray reader – DVD LG BD550

Flagey has an extensive collection of adapters to work with and combine different standards. SDI, NDI, Mac, PC, BNC, HDMI

Recording

Flagey is fully equipped to record and livestream all your events. All the studios are connected through a fiber optics network to a central recording facility for both audio and video.

1. Audio equipment

Pro Tools rig

Protools Ultimate 2022 + HDX thunderbolt chassis core

MTRX Studio Protools I/O box

Avid dock & 2x S1 controllers

DAD Mon controller

Mac mini Intel i9 + screens

Set up at the Post-production booth but flightcase mounted. Can be used in other rooms upon request.

Preamps

DAD AX32 40 IN/8 out + 128 DANTE card with SCR,
remote controlled with DADman software.

Grace design m108 8 I/O, remote controlled through web browser.

We use DANTE over a Fiber network between the preamps and MTRX studio (max 96k)

Fixed near field monitoring

PSI Audio A21M

<https://www.psiaudio.swiss/a21-m-perfectly-accurate-mid-field-monitor/>

| Genelec 8341A + GLM kit & software

<https://www.genelec.com/8341a>

| Heritage RAM5000 monitor controller

Mobile near field monitoring

Genelec 8331A

| Grace design M900 Headphone preamp

| Focusrite AM2 Dante monitor controller en Hp preamp

Backup recorder

| JoeCoe 64ch stand alone Dante HD recorder

| Macbook M1 with DVS

Recording Mics

In addition to the live/hybrid mics from page 3, flagey has the following high quality mics available for recording:

- 2 Audix ADX 60 PZM
- 2 Royer Ribbon R-10 MP
- 2 Schoeps colette MK-4

Recording

2. Video equipment

Cameras

- 4 Sony BRC-X400. SDI + NDI
- 1 RM-IP500/AC Remote
- 1 Compact 4K handy camcorder. Sony PXW-Z150
- 2 Birddog PF120 NDI + HDMI
- 2 Birddog mini 3G-SDI > NDI encoder for additional sources
- 1 Birddog studio 3G-SDI <> HDMI

Switching + recording kit

- 1 Tricaster 410+ with 3 internal recorders
- 1 Tricaster TCMinics controller
- 2 Hyperdeck Studio pro 2 recorder

Set up at the video recording booth but flightcase mounted. Can be used in other rooms upon request.

Monitoring & shading

- 1 Black Magic Smartscope duo and various monitors available (Seetec multistandard)
- 2 Birddog studio 3G-SDI > HDMI

Streaming encoder

Data video NVS-34 – streaming encoder

One source to dual output streaming

Vimeo pro account and livestreaming platform with Ticketmatic available upon request

Clocking

Rosendahl Nanosync, max 48kHz

Mif 4 time code generator

We can provide sample accurate external clocking (Wordclock & videoburst) and Timecode and at all the recording booths.

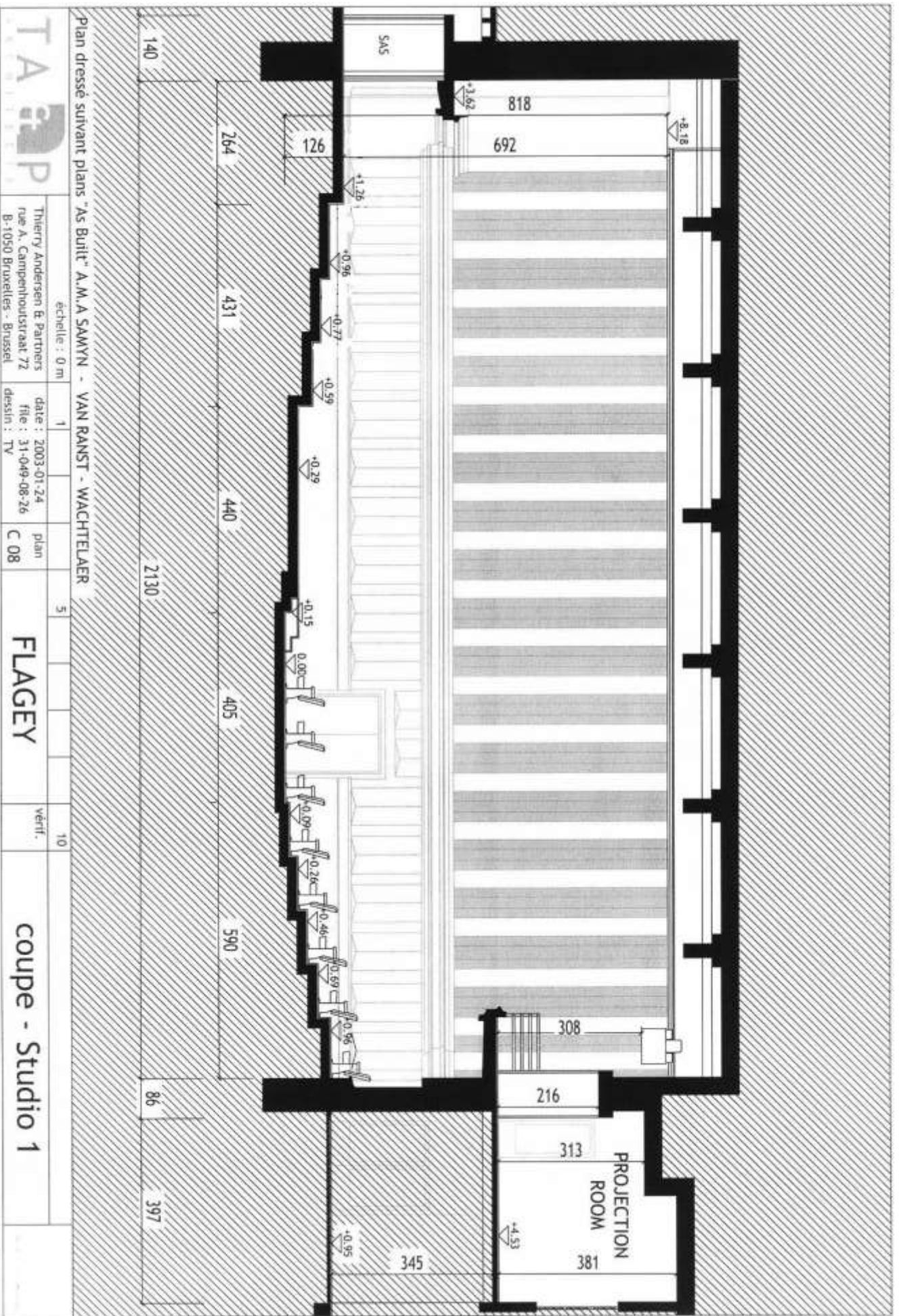
Post-production

Adobe Premiere Pro

Final Cut Pro

Imac 24" 2021 – M1

Only available at the post-production booth



Plan dressé suivant plans "As Built" A.M.A SAMYNN - VAN RANST - WACHTELAER

| | | | | |
|--|---|---|--------------|--------|
| | échelle : 0 m | 1 | 5 | 10 |
| | Thierry Andersen & Partners rue A. Camphoutstraat 72 B-1050 Bruxelles - Brussel | date : 2003-01-24 file : 31-049-08-26 dessin : TV | plan C 08 | vérif. |