

flagey

TECHNICAL RIDER

STUDIO 4

Update : 6/3/2024



Contact

Flagey vzw/asbl
Rue du Belvédèrestraat 27/5
B-1050 Brussels
Tel : +32(0)2 641 10 10
info@flagey.be
www.flagey.be

General Information

Technical and artist entrance

Rue du Belvédèrestraat 25
B-1050 Brussels

Studio 4 is located between floor 2 and 5.

Access is possible from the loading dock at level +3 (stage) or +2 (hall)

Service elevator :

Width: 1,20m

Depth: 2,40m

Height: 2,90m

Loading dock entrance:

Width: 4,32m

Height: 2,90m

Capacity: Total: 862

Parterre: 502

First balcony: 89

Second balcony: 89

Third balcony: 89

Lateral balconies: 2 x 17

Stage boxes (stalls): 2 x 30 stage L & R

All seats are fixed except at certain specific location for mixing desks, cameras and near the projection booth.



Stage

Stage dimensions

Width: 16,27 m

Clearance: 11,24 m backstage ; 15,17 m frontstage

Depth: 14m

Stage risers

The stage consists of 6 **fixed** platforms, rising up towards the back of the stage and functioning as natural, built-in risers, embracing the front stage area in a wide, inverted U-shape.

The studio narrows towards the back of the stage.

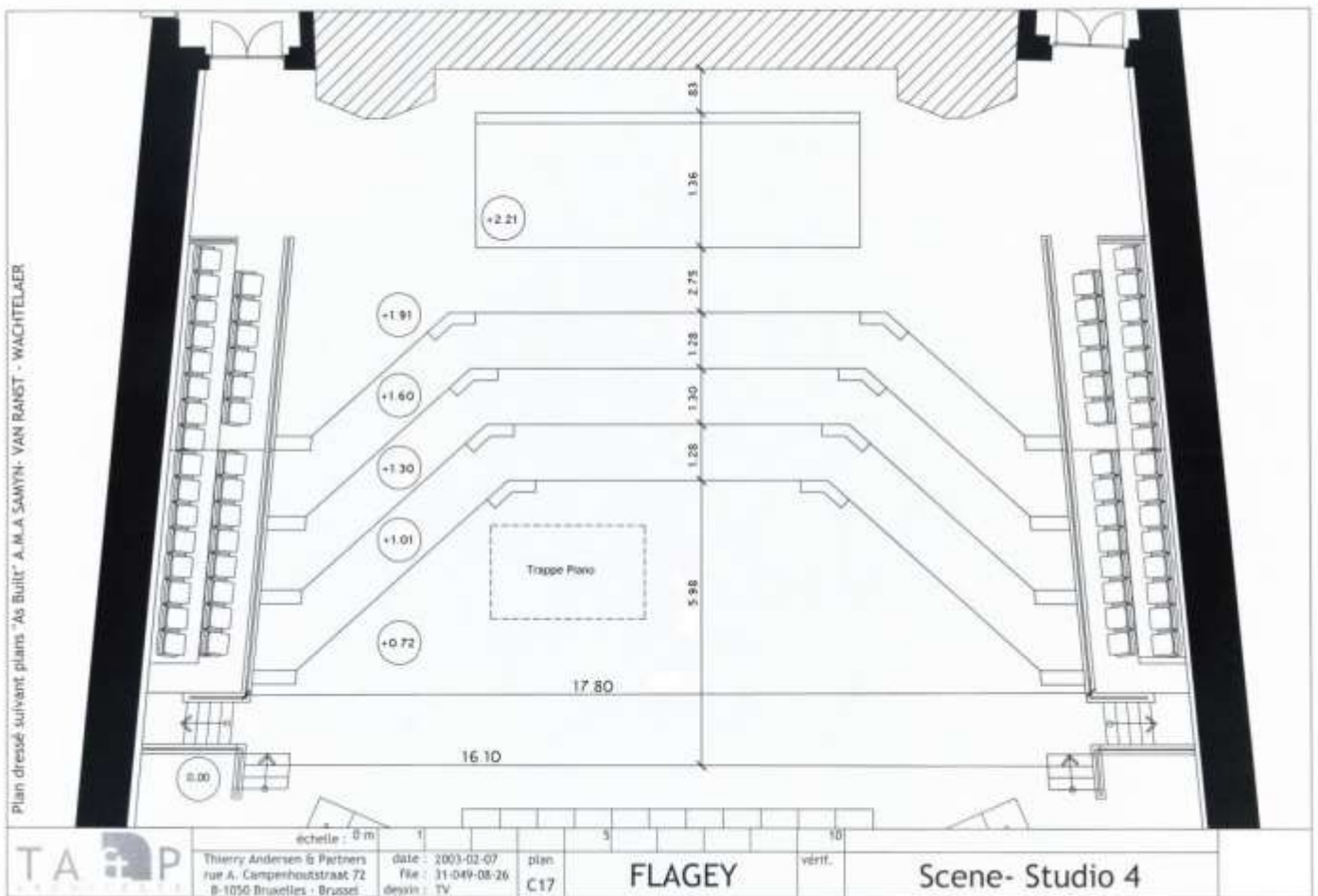
2 rows of public seats (stage boxes or stalls) line the right and left sides of the stage.

All additional risers have the same wooden finish as the stage and can be used for risers on stage or for a proscenium:

18 2x1m

2 1x1m

2 Conductor stage



Piano

There are two piano's permanently stocked under the front stage floor via a built-in hydraulic lift.
Please contact your promotor / production manager if you want to make use of a grand piano.
Steinway D (2014) – 442Hz Only
Steinway D (1987) – 440Hz / 442Hz

Blackbox & Acoustical treatment

To control reverberation in the room, 10 motorized banners can be deployed along its walls, reducing the unoccupied reverberation time from 2.3 seconds to 1.7 seconds. If needed, an even drier acoustics can be obtained by hanging additional curtains behind and to the side of the stage, using motorized trusses.

Music stands and stage equipment

80	Musician chairs
6	High chairs
5	Double bass chairs
70	Music stands
8	Foldable Music stands
6	Guitar stands
5	Double bass stands

Dressing rooms

1 x Conductor dressing room (30m² - Level +2)

3seat sofa, desk, full length mirror, fridge
Private bathroom with shower and toilet
Steinway D warm-up piano

4 x Solist dressing room (20m² - Level +2)

2seat sofa, desk, full length mirror, fridge
Private bathroom with shower and toilet

4 x Group dressing rooms (36m² - Level +3 and +4)

tables, chairs, lockers, mirrors

Sound

The PA-system is based on D&B Audiotechnik C3 Line-array, C7 and C7sub. The system was optimized for studio 4 in consultancy with D&B Audiotechnik and Amptec.

Stereo FOH

FOH L/R: Flown stacks with 5x C3 line array, 1x C7 downfill per side

FOH Subs: 4x C7sub, from L/R or separate send.

Infill: 3x C18, monosum from L/R

Side delay: 4x C18, from L or R

Amplifiers: P1200 and Epac amplifiers

Processing: Yamaha DME32 and D&B remote control software

C3 line array: 35°x5°

C7 full range: 75°x40°

C18: 85° radial, 8" woofer

C7 sub: 18" woofer

'Voice Of God' studio4

Studio 4 has a small sized PA for VOG, service announcements and background music can be played back through this system.

D&B 8S and 5S speakers on a 10D amplifier, remote controlled.

2 wireless handheld microphones are always standby.

Dolby SURROUND for cinema

DOREMI digital DCP server with a DATASAT AP20 Audio Processor.

Configuration allows for Dolby 5.1 or 7.1:

Left, Center, Right, Side Left, Side Right, Rear Left, Rear Right, Sub/FX

SPEAKERS:

L/C/R: 3x flown D&B C7

SUB: 4x C7subs on floor

SIDE: 3x C18 per side

REAR: 4x E3 parterre, 8x E3 for balconies

FOH amps: P1200 and Epac V2 amplifiers.

Crossover and system processing: Yamaha DME32, D&B remote control software.

Mixing desks

FOH: Midas Pro-2 with DL251 I/O stagebox (48 mic in)

MON: Midas Pro-2C with DL251, passive split with independent gains from FOH

Wedges

Maximum 11 wedges + PFL

10 D&B Max 12, 12", 60° radial

2 D&B Max 15, 15", 60° radial

8 E3 for small applications

10 EPAC Amps

2 D6 Amps

Mics

The collection has to be shared among all studios and is therefore not always entirely available. Please consult.

1	Shure Beta52
1	AKG D112
1	Shure Beta 91A PZM
5	Shure SM57
6	Shure SM58
2	Shure Beta 58A supercardioid
1	Shure Beta 87A supercardioid
1	Shure Beta 87C cardioid
3	Shure Beta 98A + drummounts + hornmounts
3	Sennheiser e604
3	Sennheiser MD421
2	Beyerdynamic M88
1	Electro Voice RE20
2	AKG C 451
2	AKG C414 B-ULS
2	AKG C41 XLS – matched pair
2	AKG C411
2	Audix ADX60 PZM
1	Audix D1
2	Audix D2
1	Audix D4
4	Neumann KM184
2	Neumann KM185
2	DPA 4011
2	DPA 4006C
2	DPA 2011C
4	DPA 4099 + various clips
2	DPA SC4098-BX45 Gooseneck
8	Active DI BSS AR133
1	Apex stereo DI
8	Shure MX412
2	Shure MX418
2	Schertler DYN Grand piano

Flagey also has a selection of recording microphones. See below for 'recording equipment'.

Wireless Microphones

Legal frequencies in Belgium (@2015), no permits needed:

TV channel 27 (518.000 MHz -526.000 MHz) max 50mWatt

TV channel 29 (534.000 MHz -542.000 MHz) max 50mWatt

We are occupying a lot of frequencies in TV Channel 27 and 29, SO PLEASE LET US KNOW if you bring your own radio systems so we can check compatibility.

KIT A: 4 channels - TV channel 29 (534.000 – 542.000 MHz)
1 ULX-D4Q Quad receiver (534 to 598 Mhz)

- 4 Shure ULXD2 Beta KSM9 Handheld (cardio or super cardio)
- 2 UA874 WB Active directional antenna

KIT B: 6 channels - TV channel 29 (534.000 – 542.000 MHz)

- 1 ULX-D4Q Quad receiver (534 to 598 Mhz)
- 1 ULX-D2Q Dual receiver (534 to 598 Mhz)
- 6 Shure ULXD2 Beta KSM9 Handheld (cardio or super cardio)
- 2 UA874 WB Active directional antenna

KIT C : Mobile system, 2 channels - TV channel 29 (534.000 – 542.000 MHz)

- 1 UR4D Dual receiver (534 to 598 Mhz)
- 2 Shure UR2 SM58 or B87 Handheld
- 2 UR1 beltpack with DPA 4066F OMNI headset
- 2 Directional antenna's

KIT D : Mobile system, 2 channels - TV channel 27 (518.000 – 526.000 MHz)

- 1 Sennheiser EM3032 Dual receiver
- 2 Sennheiser SKM30654 Handheld (cardio)
- 2 SK50 beltpack with DPA 4066F OMNI headset
- 2 Omnidirectional antenna's

VARIOUS

- 1 DPA D: fine dual ear DIRECTIONAL headset with TA4F or Lemo
- 2 Mipro MU-53Hn Omni headset with TA4F

Light

The lighting setup is permanent and small adaptations are only possible for very specific situations which should ALWAYS be discussed and approved in advanced.

Mixer

Avolites Expert Pro Titan (4 Dmx 512 outputs, 2048 Channels) <http://www.avolites.com/products/lighting/expert-pro>

Bringing your own mixing desk should ALWAYS be discussed in advance.

The studio 4 setup is in Artnet on a fiber optics network with fixed IP-domains for the different departments.

For full compatibility and easy connection, your desk should be working within the 192.168.60.# domain.

Exceptions on this are possible only if discussed well in advance.

Sources

- 2 ETC 750W 5°
- 4 ETC 750W 10°
- 6 ETC 750W 26° Salle
- 8 ETC 750W Découpe Zoom
- 5 Fresnel 5kW
- 18 PC 2kW – Robert Juliat
- 22 MotorYoke 750W ETC
- 6 Robe T1 Spot – mode 1
- 4 Robe LedBeam 350W – mode 1
- 8 Robe LedBeam 150W – mode 1
- 5 JB Lighting Sparx 7 300W
- 16 Probeamer Zoom 150W
- 3 Claypaky HPE700
- 4 Lumipar 50W
- 12 Customized Vintage spots with Eurolite LED bars

Fog machine

MDG Atme Atmosphere high output hazer

MDG The fan – variable speed fan on DMX

DF50 hazer

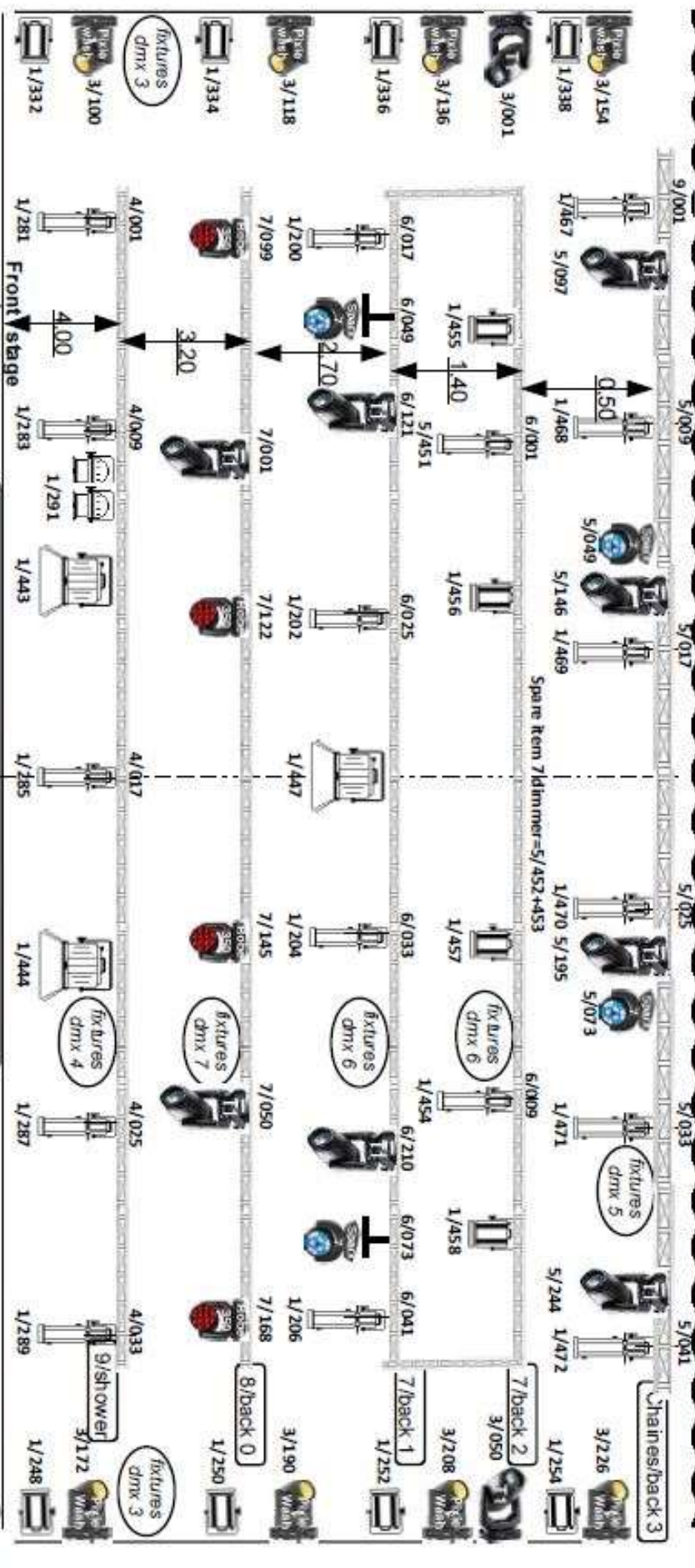
Accessories

ETC Gobo holder size B10 (internal diameter : 86 mm / diameter of the image : 64,5 mm)

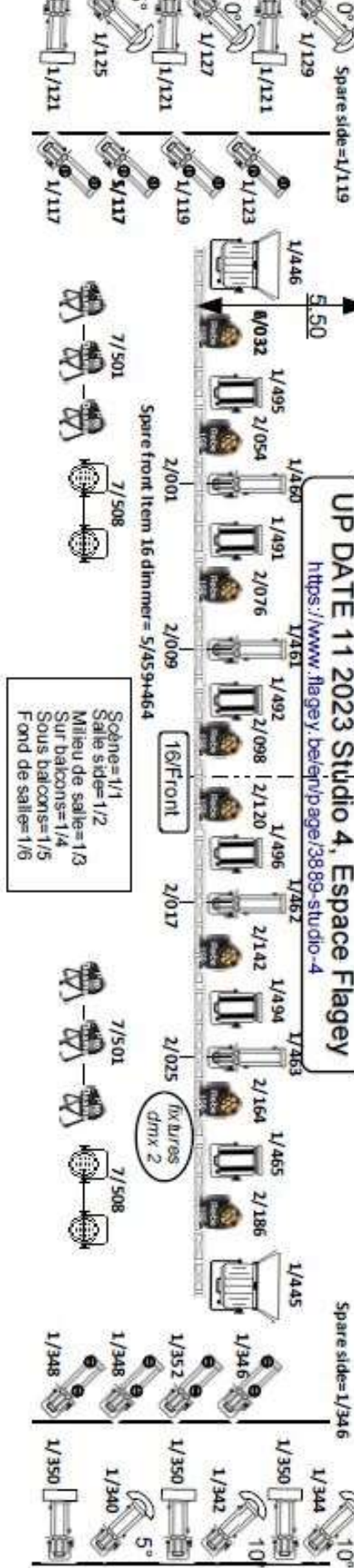
- 13 Manfrotto stand 126U



LIGNE DMX 1 = DIMMIERS.
 LIGNE DMX 8 = DIRECTES POWER FIXTURES (de C1 A C12)
 LIGNE DMX SPARE = de 13 à 16 (sortie comsol)
 LIGNE DMX de 1 à 4 (UP) = Arret Node 1 sortie 1/2/3/4
 LIGNE DMX de 5 à 8 (UP) = Arret Node 2 sortie 5/6/7/8
 LIGNE DMX de 9 à 12 (SOL) = Arret Node 3 sortie 9/10/11/12
 Programmer origine 9001



UPDATE 11 2023 Studio 4, Espace Flagey
<https://www.flagey.be/en/page/38889-studio-4>



Scène=1/1
 Salle side=1/2
 Milieu de salle=1/3
 Sous balcons=1/4
 Fond de saie=1/5

Video

1. Cinema setup



Screen

Mobile screen - white - super matt perforated - 15m x 7m – Ratio image 2.35 Widescreen
Structure Prolyte H40V & H40L

DCP Installation

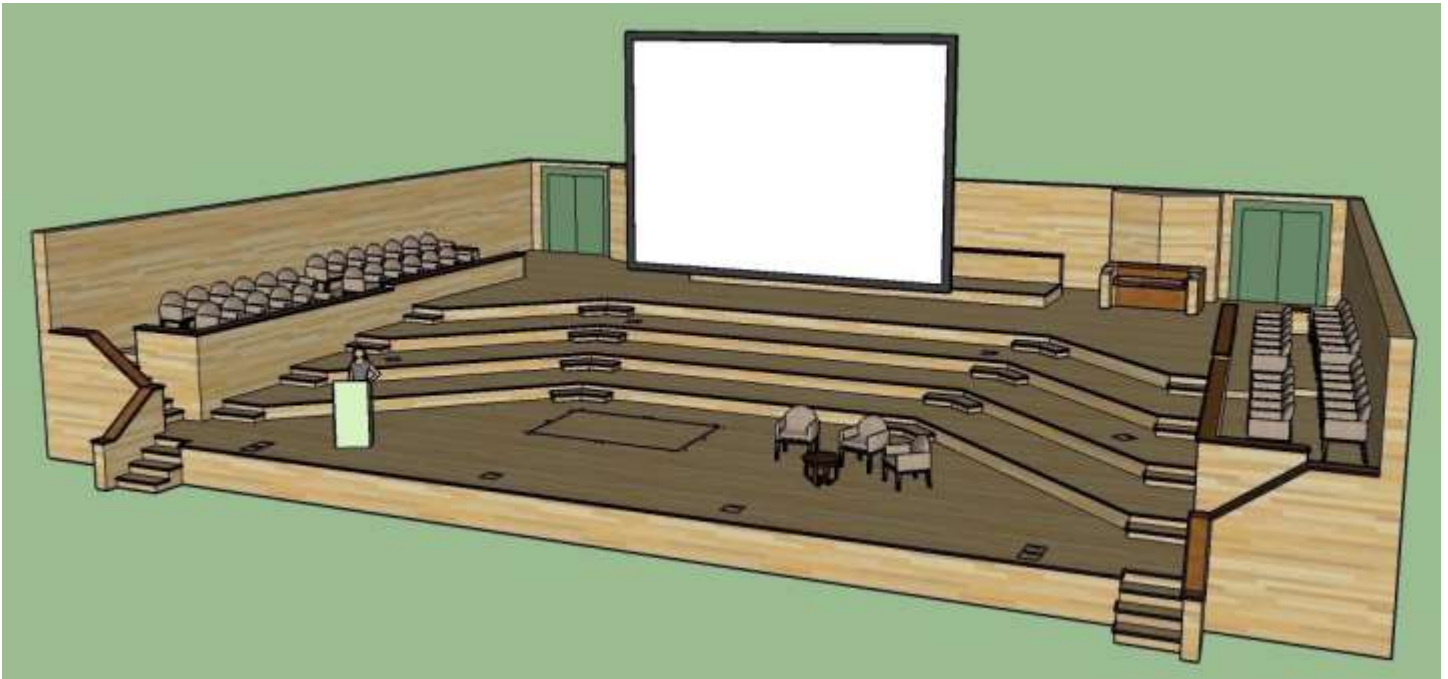
Film Projector DLP Barco DP4K-32B 3kw – 7kw (Xenon – lamp)
Doremi Server DCP2K4-ShowVault 3.2TB
Barco Film Scaler ACS2048
Sound Processor DATASAT AP 20

Stage

In cinema setup and to avoid reflections, a full blackbox is installed as well as a black carpet covering the stage.

Video

2. Projection setup



Screen

Screen STUMPL white - matt with black border – frame: 7.52m x 4.31m – Ratio image 16/9

Projector

Film Projector DLP Barco DP4K-32B 3kw – 7kw (Xenon – lamp)

Panasonic DLP PT-DW7000E 6,000 lm 2 x UHM lamp 300 Watt – Resolution 1400 x

Mixer & sources

- 1 Roland V-60HD
- 1 Blackmagic Atem Mini
- 1 TvOne C2-2855 universal scaler
- 1 Blu-ray reader – DVD LG BD550

Flagey has an extensive collection of adapters to work with and combine different standards. SDI, NDI, Mac, PC, BNC, HDMI

Recording

Flagey is fully equipped to record and livestream all your events. All the studios are connected through a fiber optics network to a central recording facility for both audio and video.

1. Audio equipment

Pro Tools rig

Protools Ultimate 2022 + HDX thunderbolt chassis core

MTRX Studio Protools I/O box

Avid dock & 2x S1 controllers

DAD Mon controller

Mac mini Intel i9 + screens

Set up at the Post-production booth but flightcase mounted. Can be used in other rooms upon request.

Preamps

DAD AX32 40 IN/8 out + 128 DANTE card with SCR,
remote controlled with DADman software.

Grace design m108 8 I/O, remote controlled through web browser.

We use DANTE over a Fiber network between the preamps and MTRX studio (max 96k)

Fixed near field monitoring

PSI Audio A21M

<https://www.psiaudio.swiss/a21-m-perfectly-accurate-mid-field-monitor/>

| Genelec 8341A + GLM kit & software

<https://www.genelec.com/8341a>

| Heritage RAM5000 monitor controller

Mobile near field monitoring

Genelec 8331A

| Grace design M900 Headphone preamp

| Focusrite AM2 Dante monitor controller en Hp preamp

Backup recorder

| JoeCoe 64ch stand alone Dante HD recorder

| Macbook M1 with DVS

Recording Mics

In addition to the live/hybrid mics from page 3, flagey has the following high quality mics available for recording:

- 2 Audix ADX 60 PZM
- 2 Royer Ribbon R-10 MP
- 2 Schoeps colette MK-4

Recording

2. Video equipment

Cameras

- 4 Sony BRC-X400. SDI + NDI
- 1 RM-IP500/AC Remote
- 1 Compact 4K handy camcorder. Sony PXW-Z150
- 2 Birddog PF120 NDI + HDMI
- 2 Birddog mini 3G-SDI > NDI encoder for additional sources
- 1 Birddog studio 3G-SDI <> HDMI

Switching + recording kit

- 1 Tricaster 410+ with 3 internal recorders
- 1 Tricaster TCMinics controller
- 2 Hyperdeck Studio pro 2 recorder

Set up at the video recording booth but flightcase mounted. Can be used in other rooms upon request.

Monitoring & shading

- 1 Black Magic Smartscope duo and various monitors available (Seetec multistandard)
- 2 Birddog studio 3G-SDI > HDMI

Streaming encoder

Data video NVS-34 – streaming encoder

One source to dual output streaming

Vimeo pro account and livestreaming platform with Ticketmatic available upon request

Clocking

Rosendahl Nanosync, max 48kHz

Mif 4 time code generator

We can provide sample accurate external clocking (Wordclock & videoburst) and Timecode and at all the recording booths.

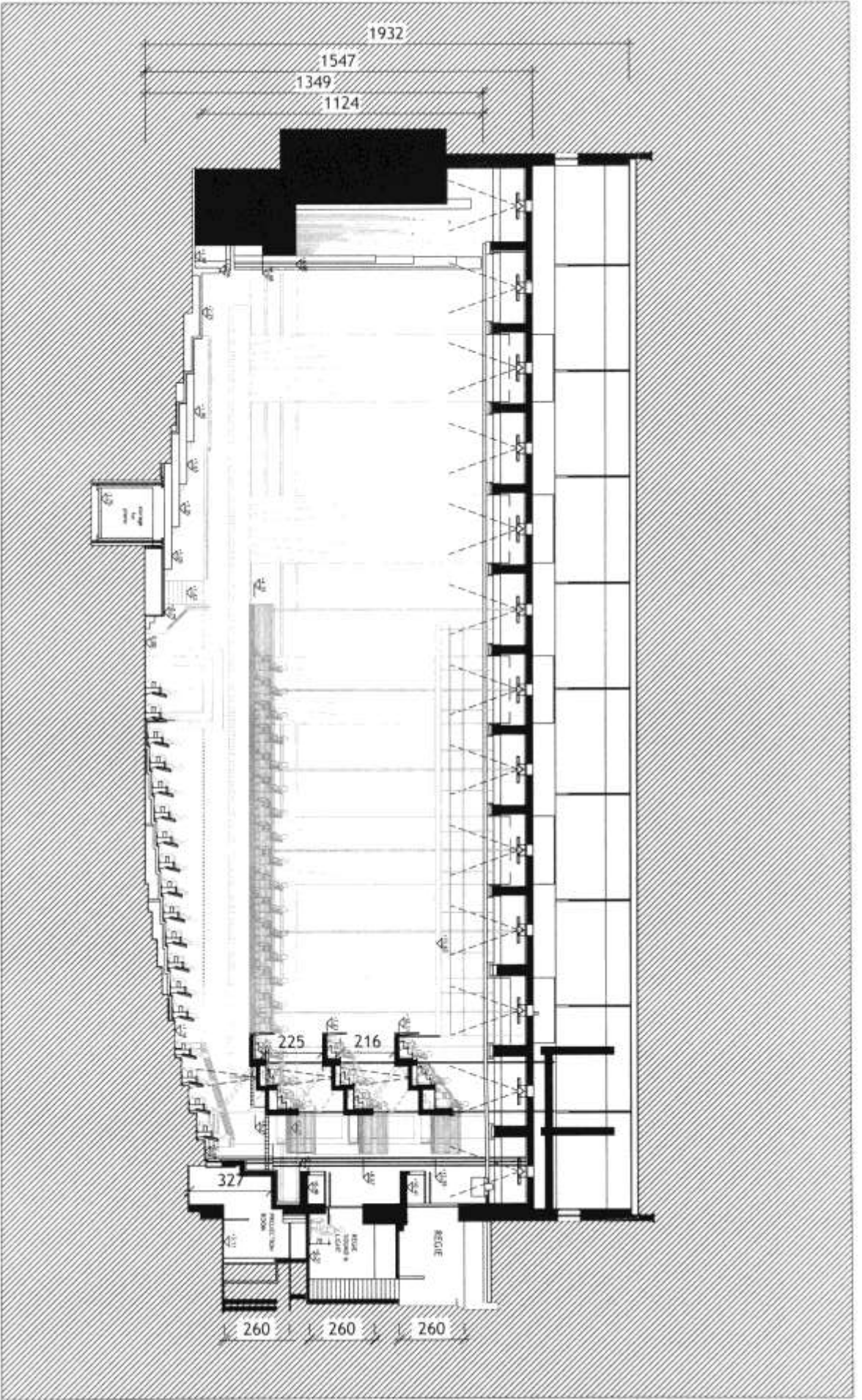
Post-production

Adobe Premiere Pro

Final Cut Pro

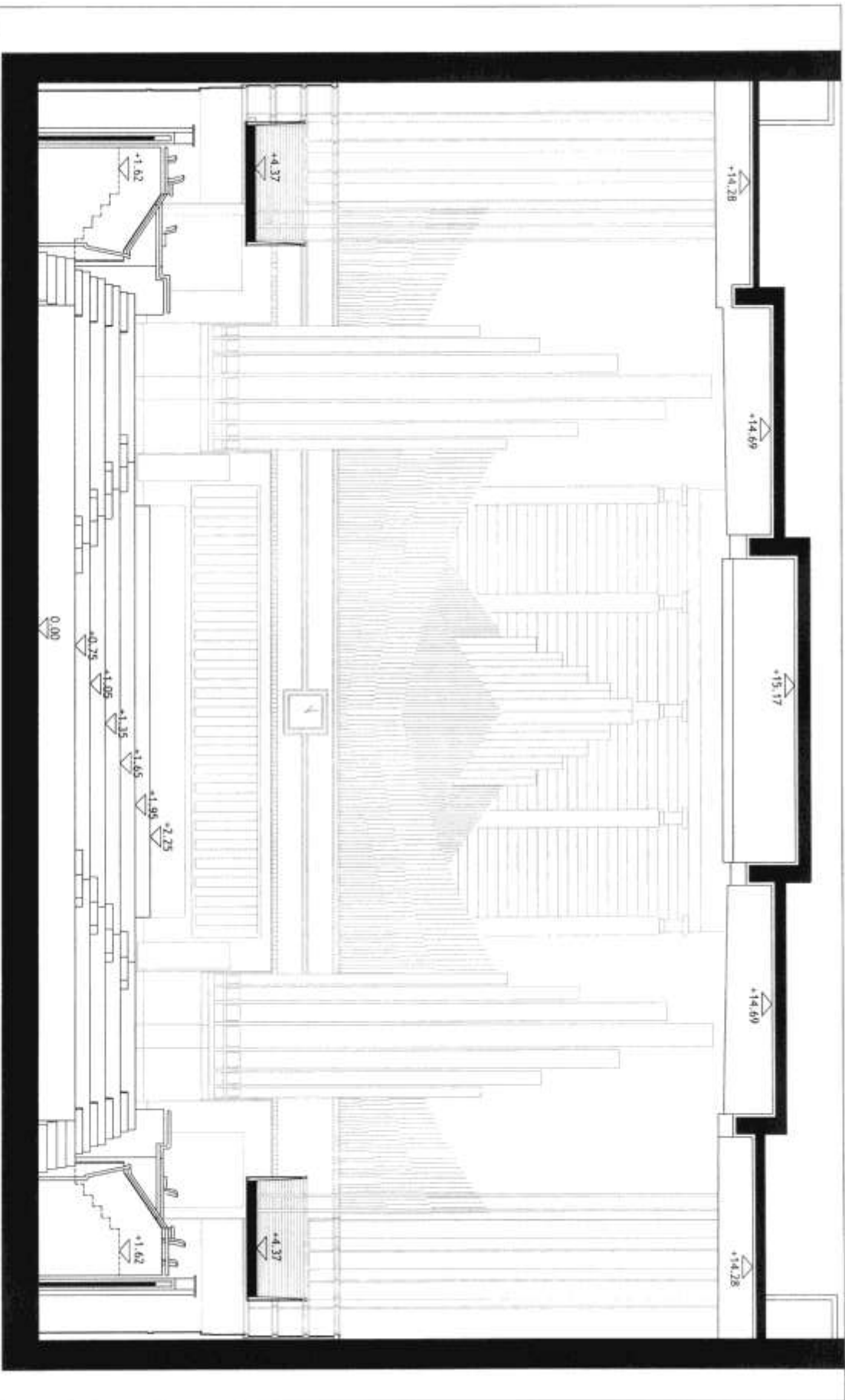
Imac 24" 2021 – M1

Only available at the post-production booth



Plan dressé suivant plans "As Built" A.M.A SAMYN- VAN RANST - WACHTELAER

	Thierry Andersen & Partners rue A. Campenhoutstraat 72 B-1050 Bruxelles - Brussel	échelle : 0 m	date : 2003-02-07 file : 31-049-08-26 dessin : TV	plan C15	10	20	FLAGEY	vérit.	coupe long. - Studio 4
	1	5	10	20	10	20	FLAGEY	vérit.	coupe long. - Studio 4



Plan dressé suivant plans "As Built" A.M.A SAMYX- VAN RANST - WACHTELAER



Thierry Andersen & Partners
 rue A. Camphoutstraat 72
 B-1050 Bruxelles - Brussel

échelle : 0 m
 date : 2003-02-07
 file : 31-049-08-26
 dessin : TV

plan
 C 16

5
 10

FLAGEY
 vérif.
 coupe transv. - Studio 4